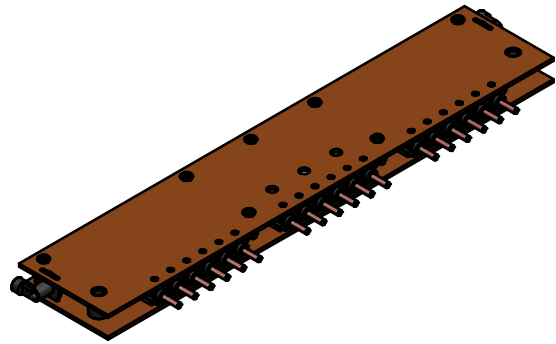
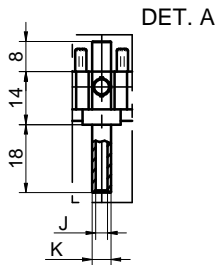
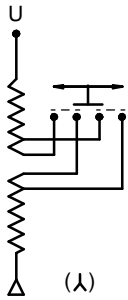
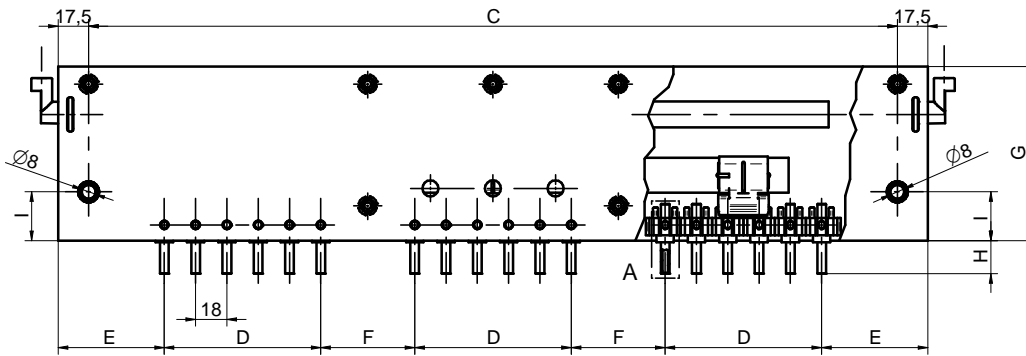
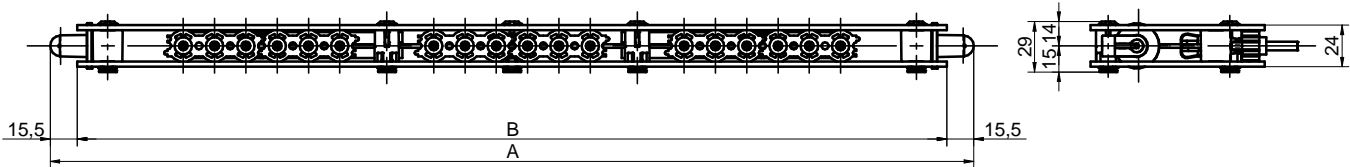


Type 099-04.100 - Three phase tap changer

- off-circuit operation
- used in mineral oil or silicon oil
- bridge connection
- 24 kV - 36 kV
- 30 A - 60 A
- from 5 to 7 positions
- regulation 2.5% per position



Code		KV	mm									
30 A	60 A		POS	A	B	C	D	E	F	G	H	I
J = 3,1 K = 5	J = 5,1 K = 7	24	5	531	500	465	90	* 61	54	100	19	28
04.100.235	04.100.265		6	585	554	519	108	* 61	54	100	19	28
04.100.236	04.100.266		7	639	608	573	126	* 61	54	100	19	28
04.100.237	04.100.267	36	5	751	720	685	90	135	90	117	19	30
04.100.335	04.100.365		6	805	774	739	108	135	90	117	19	30
04.100.336	04.100.366		7	859	828	793	126	135	90	117	19	30
04.100.337	04.100.367											

* Fixing with insulating support.